



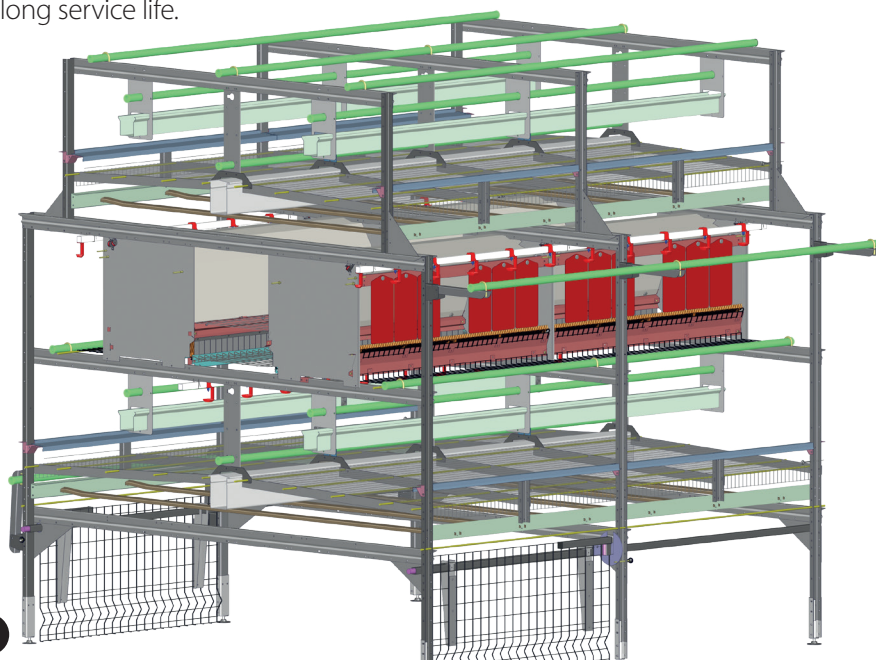
**Eggcellence.**  
Made in Germany.

## Aviary PRO 11

### *Our flexible bestseller for sustainable cage-free egg production*

The PRO 11 aviary system is an open multi-tier system designed for optimal use of space in new or existing houses. Thanks to its open structure the PRO 11 is very easy to clean which is a large plus when it comes to the prevention of red mite.

Its stainless steel support legs and strong drive unit for the manure belts make the system very durable and ensure a long service life.



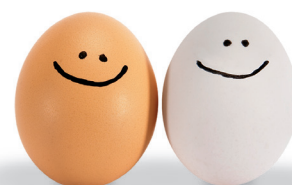
Stimulates natural behavior of the birds

Advantageous design for more birds per sq.ft. usable floor space

Meets highest animal welfare standards

Excellent egg quality and optimum production conditions

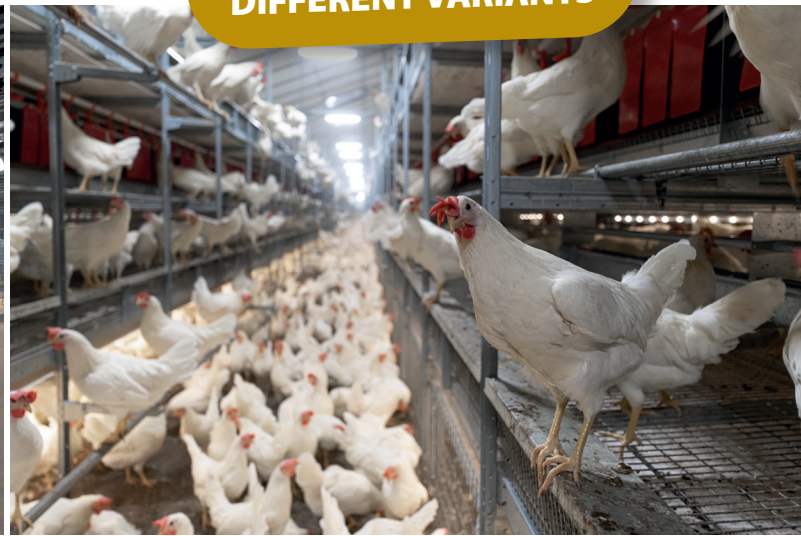
Strong and durable housing system thanks to high-quality components



# Aviary PRO 11

*The multi-tier system for optimal use of space in new or existing houses*

**MORE THAN 80  
DIFFERENT VARIANTS**



Section length: 1205 mm | 3'-11.4"

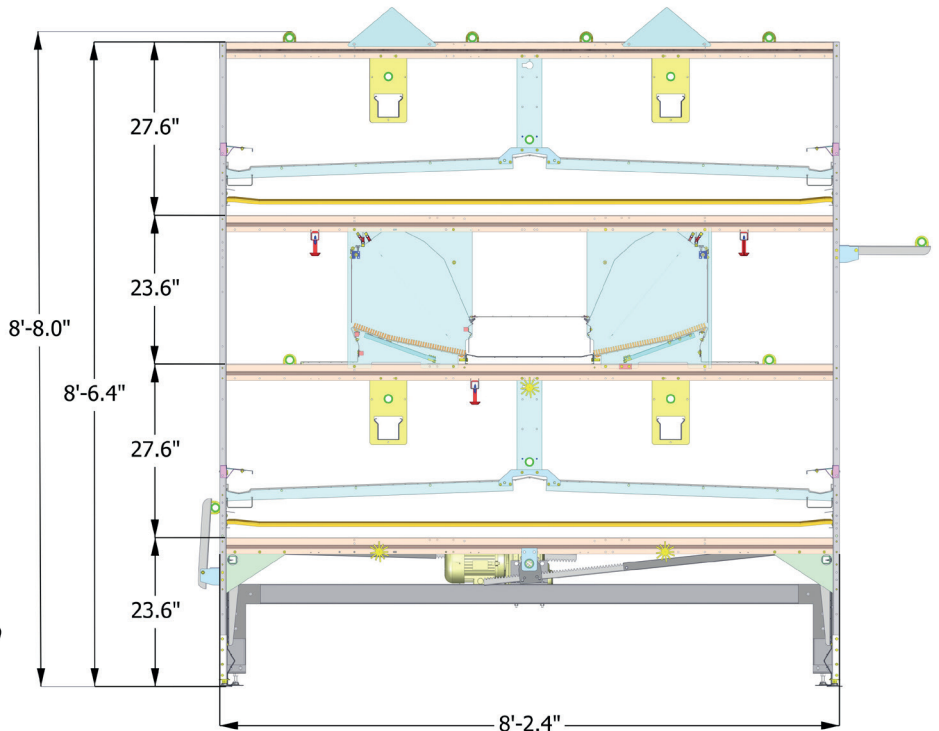
System height: 2600 mm | 8'-6.4"

System width: 2000 mm | 6'-6.7"

2200 mm | 7'-2.6"

2500 mm | 8'-2.4"

3000 mm | 9'-10.1"



**LAE Anlagenbau GmbH**  
Altenwalder Chaussee 94-100  
D - 27472 Cuxhaven  
GERMANY

Tel.: +49 4721 105 0

FAX : +49 4721 105 210

Mail : [info@lae-cuxhaven.de](mailto:info@lae-cuxhaven.de)

Web : <http://www.lae-cuxhaven.de>