

LAE Exhaust Unit TYPE DA600

- **Technical Information**



LAE Exhaust Units TYP DA600 are suitable for any task of ventilation in agriculture. The solid pipe system is made of durable, easy care polypropylene and can be easily treated with a high pressure cleaner.

The aerodynamically optimal shaped inlet nozzle with the DA 74 Adjuster Motor and the swivel shutter ensure a high efficient air inflow.

The exhaust cone also effects an increase of throw distance and at the same time it reduces the ingress of water drops into the exhaust units.

The high specific air capacity of the exhaust unit DA 600 in connection with a fan which is selectable as per the required air capacity enables a low energy consumption of this long-lasting construction.

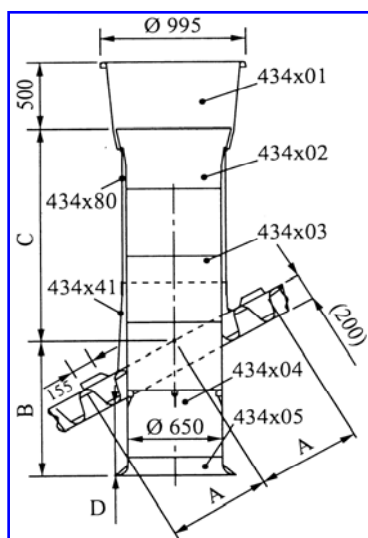
The DA 600 Exhaust units are successful in daily use worldwide in the agricultural industry, for years under most difficult conditions as well.

LAE Anlagenbau GmbH • Altenwalder Chaussee 94 – 100 • D – 27472 Cuxhaven

Tel : +49 4721 105 0 • FAX : +49 4721 105 210 • E-MAIL : cux@lae-cuxhaven.de

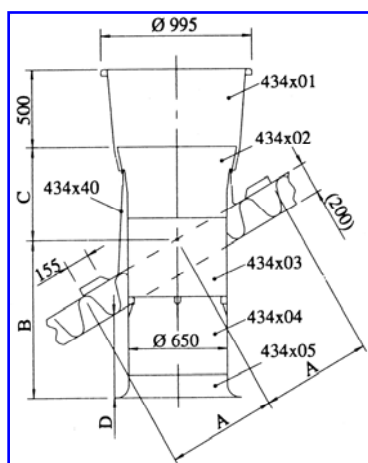
Internet : <http://www.lae-cuxhaven.de>

Livestock Animal Equipment



Installation dimensions for roof mounting DA 600 in long version

Roof pitch [°]	Number of pipe segments 500 mm	Installation dimension A	Installation dimension B	Installation dimension C	Installation dimension D
0	2	0,61	0,76	1,34	0,56
5	2	0,61	0,73	1,38	0,49
10	2	0,61	0,69	1,41	0,41
15	2	0,61	0,66	1,45	0,37
20	2	0,61	0,62	1,48	0,25
25	2	0,61	0,58	1,52	0,17
30	3	0,61	1,03	1,57	0,55
35	3	0,72	0,98	1,62	0,44
40	3	0,72	0,92	1,67	0,31
45	3	0,72	0,86	1,73	0,16
50	4	0,72	1,27	1,81	0,46



Installation dimensions for roof mounting DA 600

Roof pitch [°]	Number of pipe segments 500 mm	Installation dimension A	Installation dimension B	Installation dimension C	Installation dimension D
0	0	0,61	0,76	0,34	0,56
5	0	0,61	0,73	0,38	0,49
10	0	0,61	0,69	0,41	0,41
15	0	0,61	0,66	0,45	0,37
20	0	0,61	0,62	0,48	0,25
25	0	0,61	0,58	0,52	0,17
30	1	0,61	1,03	0,57	0,55
35	1	0,72	0,98	0,62	0,44
40	1	0,72	0,92	0,67	0,31
45	1	0,72	0,86	0,73	0,16
50	2	0,72	1,27	0,81	0,46

Description Type	Negative Pressure [Pa]	Air Capacity m³/h	Specific W 1000 m³/h
ECT 632-6 230V	0	13.600	35
	-10	13.000	38
	-20	12.500	40
	-30	12.000	43
	-40	11.300	49
	-50	10.300	53

Description Type	Negative Pressure [Pa]	Air Capacity m³/h	Specific W 1000 m³/h
DCT 632-6 400V	0	13.600	32
	-10	13.200	36
	-20	12.600	38
	-30	12.100	42
	-40	11.300	46
	-50	10.400	52

Description Type	Negative Pressure [Pa]	Air Capacity m³/h	Specific W 1000 m³/h
DA 600-5 400V	0	16.500	44
	-10	16.200	46
	-20	15.600	49
	-30	15.200	51
	-40	14.700	54
	-50	14.300	56

Fan Type	Fan Noise, outside (2m distance, 45°) dB (A)
ECT 632-6 230V	73 dB (A)
DCT 632-6 400V	73 dB (A)
DA600-5 400V	79 dB (A)

Other electric voltage and power as per your request