



# FarmOnline+

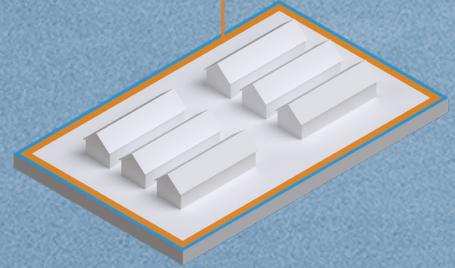
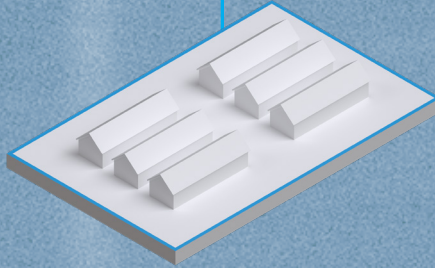
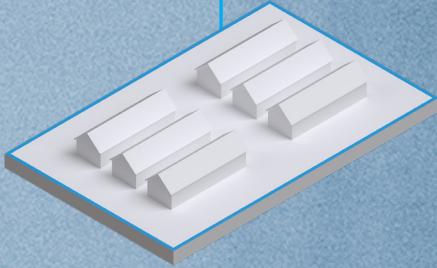
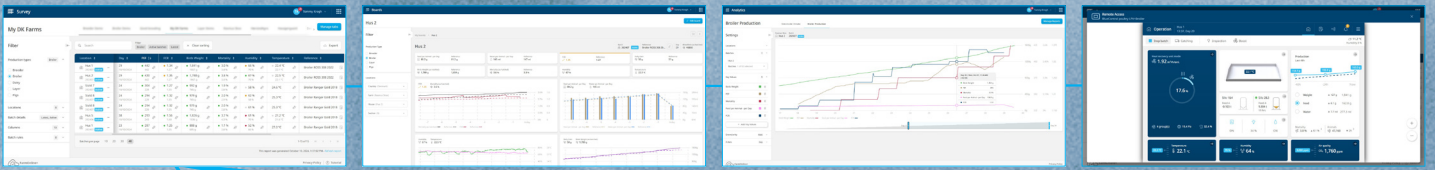
for the farm manager

**Your partner for service**



**LAE Anlagenbau GmbH**  
Altenwalder Chaussee 94-100  
D - 27472 Cuxhaven  
GERMANY  
TEL: +49 4721 105 0  
FAX : + 49 4721 105 210  
info@lae-cuxhaven.de  
www.lae-cuxhaven.de





Controller of another brand



## Why FarmOnline+ for the farm manager

FarmOnline+ gives the farm manager on poultry farms the following advantages:

- Trustworthy, validated, and filtered data from all houses on the farm.
- Possibility to initiate quick action in case of irregularities.
- Improved production and business development based on reliable real-time data.
- Efficient implementation of management strategies at the house level.

### **Do not spend time and energy on data collection**

No time is spent collecting data due to the systematic electronic transmission system. Instead, the time can be spent analyzing data and caring for the animals.

### **No manual processes!**

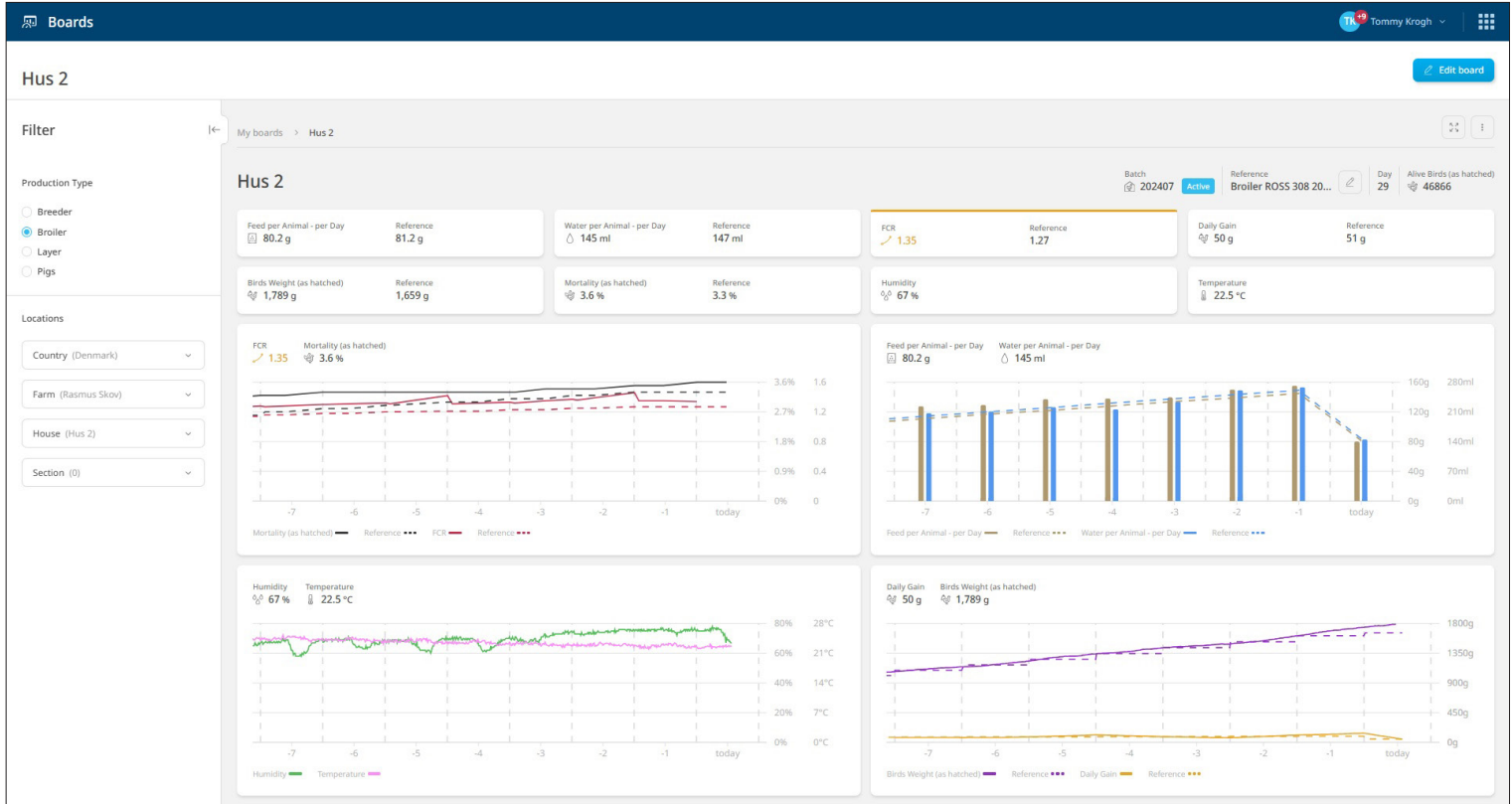
Data is transferred directly from the controller to the farm manager in his office. Real-time data is not influenced by manual processes that can cause errors and lower the validity.

### **Data from houses without BlueControl controllers**

If the farmer manages houses without a SKOV climate and production controller, relevant data from these houses is collected via a sensor gateway. Thus, the farm manager can get a complete overview of all the houses on the farm.

### **Configure your FarmOnline+ system**

FarmOnline+ is a bundle of apps that gives you an overview at the livestock house and farm level, enabling the farm manager to optimize animal welfare and production.



## Boards

The Boards app serves as the farm manager's control center. The dashboard visually presents the current production status using simple traffic light colors.

Boards enable farm managers to quickly focus on production results, delve into issues, and narrow down problems by monitoring the most critical key values.

The overview can be tailored to visually display information according to specific needs.

**Survey** TK Tommy Krogh

**My DK Farms** Manage tabs

Filter:  Filter: **Broiler** Active batches Latest Export

Location	Day	PEF	FCR	Birds Weight	Mortality	Humidity	Temperature	Reference
Hus 1 202407 Active	29 10/10/2024	442 442	1.34 1.27	1,841 g 1667 g	3.0 % 3.4 %	66 % 70 %	22.4 °C 22.1 °C	Broiler ROSS 308 2022
Hus 2 202407 Active	29 10/10/2024	430 442	1.35 1.27	1,788 g 1667 g	3.6 % 3.4 %	67 % 70 %	22.5 °C 22.1 °C	Broiler ROSS 308 2022
Stald 7 202407 Active	24 10/10/2024	304 228	1.27 1.35	992 g 745 g	1.9 % 2.8 %	58 %	24.6 °C	Broiler Ranger Gold 2018
Stald 8 202407 Active	24 10/10/2024	294 228	1.32 1.35	979 g 745 g	2.0 % 2.9 %	62 % 58 %	25.3 °C	Broiler Ranger Gold 2018
Stald 8 202407 Active	24 10/10/2024	294 228	1.32 1.35	979 g 745 g	2.0 % 2.8 %	61 %	25.3 °C	Broiler Ranger Gold 2018
Hus 5 202406 Active	38 10/10/2024	293 243	1.56 1.60	1,826 g 1536 g	3.7 % 4.3 %	61 % 70 %	21.2 °C 21.6 °C	Broiler Ranger Gold 2018
Hus 1 202407 Active	23 10/10/2024	287 225	1.25 1.35	888 g 695 g	1.1 % 2.8 %	52 % 66 %	27.0 °C	Broiler Ranger Gold 2018

Batches per page: 10 20 30 **40** 1-15 of 15

This report was generated October 10, 2024, 1:37:02 PM - [Refresh report](#)

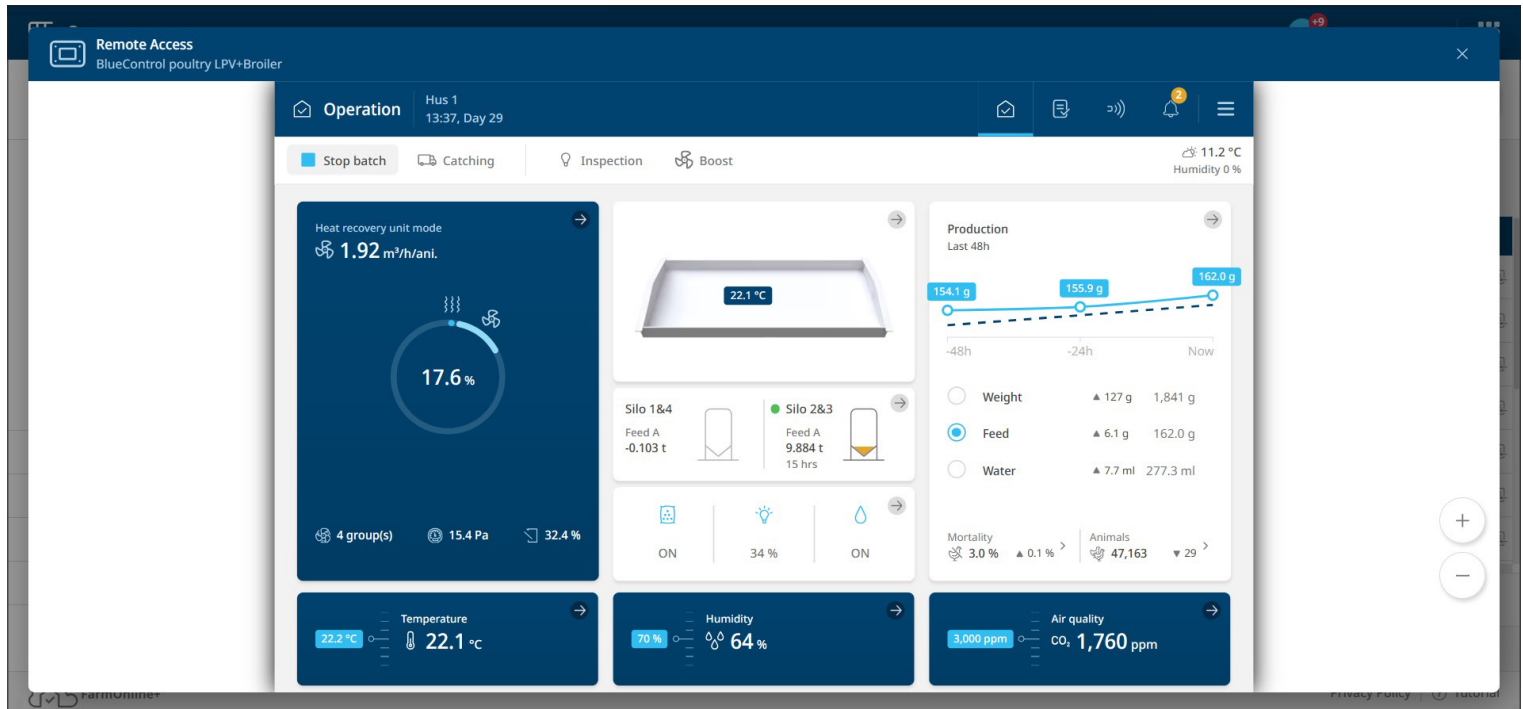
FarmOnline+ Privacy Policy | Tutorial

## Survey

The Survey module provides an overview of climate and production data for unlimited houses, enabling the farm managers to create applicable images for the best overview.

Typical productivity figures such as FCR, PEF, water and feed ratio, mortality, weight, etc., are available. The farm manager can quickly assess the situation via the 'traffic light' color codes and move on to other daily routines if everything is green.

The module provides an excellent overview that helps the farm manager allocate his resources optimally, focusing on the houses that do not perform optimally and utilizing the knowledge from house to house.



### Remote access

The Remote Access module provides the option to obtain a 100% identical display and operation of all climate and production controllers connected to the network.

The module provides the daily user of the climate and production controller the possibility to set all parameters of the controllers in the livestock house even when he is not physically present on the farm.

Remote Access also enables service technicians and supervisors to remotely troubleshoot, instruct, and guide daily users in the climate and production controller operations from the same user interface.

Alarm Overview

Filter: 1 locations, All alarms, All statuses, All categories, Last month

Location	Descriptions	Activated	Acknowledged	Deactivated	Duration
Hus 1	{3:0} is soon empty Alarm The remaining amount of {3:0} is 82.80 t. This is lower than the set limit	9 hours ago Oct 14, 2024, 10:48 PM GMT+2	8 minutes ago Oct 15, 2024, 08:16 AM GMT+2	—	9 hours 35 minutes Active
Hus 1	{3:0} is soon empty Alarm The remaining amount of {3:0} is 82.80 t. This is lower than the set limit	10 hours ago Oct 14, 2024, 10:20 PM GMT+2	9 hours ago Oct 14, 2024, 10:48 PM GMT+2	9 hours ago Oct 14, 2024, 10:47 PM GMT+2	0 hours 27 minutes
Hus 2	{3:0} is soon empty Alarm The remaining amount of {3:0} is 82.80 t. This is lower than the set limit	10 hours ago Oct 14, 2024, 10:20 PM GMT+2	8 minutes ago Oct 15, 2024, 08:16 AM GMT+2	—	10 hours 4 minutes Active
Hus 1	No feed to feed weigher Alarm Feed weigher 1 has not registered any feed. The feed supply is turned off.	1 days ago Oct 13, 2024, 03:56 PM GMT+2	1 days ago Oct 13, 2024, 04:46 PM GMT+2	1 days ago Oct 13, 2024, 04:47 PM GMT+2	0 hours 50 minutes
Hus 2	ON/OFF alarm Alarm The contact is open	1 days ago Oct 13, 2024, 03:41 PM GMT+2	1 days ago Oct 13, 2024, 03:41 PM GMT+2	1 days ago Oct 13, 2024, 04:47 PM GMT+2	1 hours 5 minutes
Hus 2	No feed to feed weigher Alarm Feed weigher 1 has not registered any feed. The feed supply is turned off.	1 days ago Oct 13, 2024, 03:41 PM GMT+2	1 days ago Oct 13, 2024, 04:47 PM GMT+2	1 days ago Oct 13, 2024, 04:48 PM GMT+2	1 hours 7 minutes
Hus 2	Silo 184 content is low Alarm The feed amount is 0.47 t. This is lower than the set limit	1 days ago Oct 13, 2024, 02:43 PM GMT+2	1 days ago Oct 13, 2024, 04:47 PM GMT+2	—	1 days 17 hours 41 minutes Active
Hus 1	Silo 184 content is low Alarm The feed amount is 0.47 t. This is lower than the set limit	1 days ago Oct 13, 2024, 02:43 PM GMT+2	1 days ago Oct 13, 2024, 04:46 PM GMT+2	—	1 days 17 hours 41 minutes Active
Hus 2	{3:0} is soon empty Alarm The remaining amount of {3:0} is 79.20 t. This is lower than the set limit	2 days ago Oct 12, 2024, 04:25 PM GMT+2	1 days ago Oct 13, 2024, 04:47 PM GMT+2	1 days ago Oct 13, 2024, 05:42 PM GMT+2	1 days 1 hours 17 minutes
Hus 1	{3:0} is soon empty Alarm The remaining amount of {3:0} is 79.20 t. This is lower than the set limit	2 days ago Oct 12, 2024, 04:24 PM GMT+2	1 days ago Oct 13, 2024, 04:46 PM GMT+2	1 days ago Oct 13, 2024, 05:42 PM GMT+2	1 days 1 hours 17 minutes

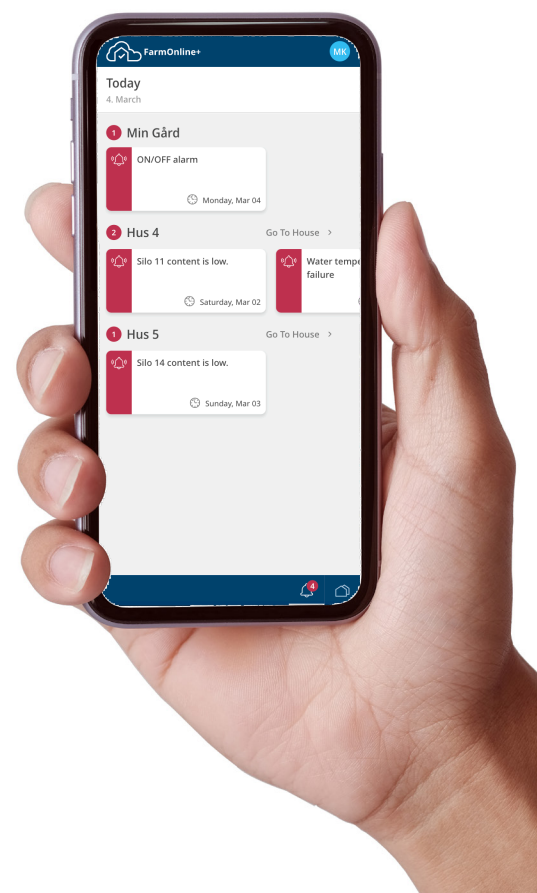
Alarms per page: 10 20 30 40

1-10 of 71

### Alarm

The well-being of the animals in live-stock houses is of utmost importance. Quick and efficient action is required in case of a ventilation system failure, delayed restoration, or any issues with the feed supply. It is crucial to ensure the welfare and productivity of the animals.

The FarmOnline+ Alarm module provides the farm manager with a quick overview of the type and location of the alarm. It helps the manager take appropriate action to address the issue.



Default Tab

Filter

Company: Company (31)

Locations: 0

Fill Levels: All fill levels

Columns: 7

Search:

Filter: Include unassigned silos All fill levels Clear sorting

Export as CSV

Silo	Status	Fill level	Estimated time to empty	Fill level forecast				Capacity	Feed type
				Today	+1	+2	+3		
alm foder	100 %	31.382 t	11/10/2024 7:00 PM (+01:00)	30.515 t	29.330 t	28.145 t	26.960 t	10 t	A
alm foder	100 %	31.382 t	11/10/2024 7:15 PM (+01:00)	30.516 t	29.332 t	28.147 t	26.962 t	10 t	A
Silo 13	70 %	6.976 t	10/16/2024 4:15 AM (+02:00)	0.798 t	Empty	Empty	Empty	10 t	B
Silo 16	54 %	5.43 t	10/16/2024 12:37 AM (+02:00)	Empty	Empty	Empty	Empty	10 t	B
alm foder	45 %	4.545 t	—	4.545 t	4.545 t	4.545 t	4.545 t	10 t	A
Silo 1&4	26 %	13.754 t	—	13.754 t	13.754 t	13.754 t	13.754 t	52 t	A
Silo 2&3	19 %	9.638 t	10/15/2024 10:33 PM (+02:00)	Empty	Empty	Empty	Empty	52 t	A
Silo 2&3	0 %	0.041 t	—	0.041 t	0.041 t	0.041 t	0.041 t	52 t	A
Slut	0 %	Empty	—	Empty	Empty	Empty	Empty	10 t	B
Slut	0 %	Empty	—	Empty	Empty	Empty	Empty	10 t	A
Silo 11	0 %	Empty	—	Empty	Empty	Empty	Empty	10 t	A
Silo 12	0 %	Empty	—	Empty	Empty	Empty	Empty	10 t	A
Silo 15	0 %	Empty	—	Empty	Empty	Empty	Empty	10 t	A

Silos per page: 10 20 30 40

1-16 of 16

This report was generated October 15, 2024 at 8:29:00 AM - Refresh report

### Silo management

The Silo app is a tool that helps farm managers keep track of their feed levels. The app provides an overview of all connected silos, showing their current fill levels and forecasting future levels for upcoming days. It also estimates the time when the silos will be emptied.

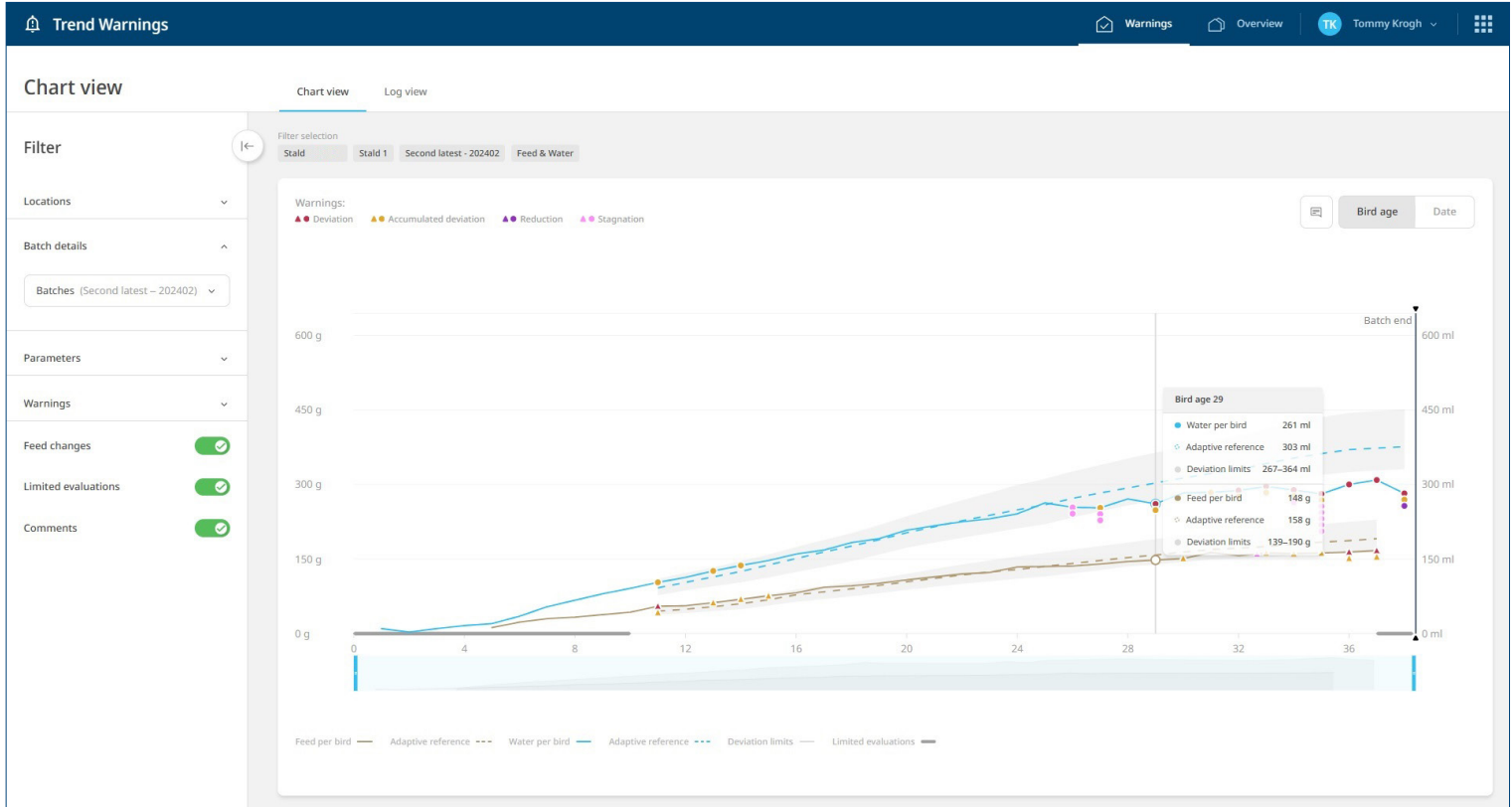
A graphical representation of the fill level history depicts the changes over time, including when feed is added or withdrawn. This information is useful for planning feed ordering activities.

The screenshot shows a web application interface. At the top, there are two tabs: 'Export' and 'Manage profile'. The main content area is titled 'API Key Overview' and features a list of 'COMPANY' entries, each labeled 'PIG CUSTOMER DEMO' or 'POULTRY CUSTOMER DEMO'. A search bar and a 'Key name' dropdown are visible. A modal window titled 'Edit Profile' is open in the foreground. It contains a 'Profile name \*' field with the value 'Power BI Exporter' and a character count '17/100'. Below this is a section titled 'SELECTED KEY VALUES' containing a list of eight items, each with a trash icon: 'Total Feed (male) - Last 7 Days', 'Total Feed (female) - Last 7 Days', 'Total Feed (male) - per Week', 'Total Feed (female) - per Week', 'Total Feed (male) - previous Day', 'Total Feed (female) - previous Day', and 'Total Feed - previous Day'. At the bottom of the modal are buttons for '+ Add key values', 'Cancel', and 'Save'.

### Exporting data

The farm is an integral part of a larger value chain that includes other farms, feed mills, processing plants, etc. These units depend on the farm's data to optimize their operations.

The export modules make it possible to share the farm's data with these units, leading to an overall optimization of the value chain

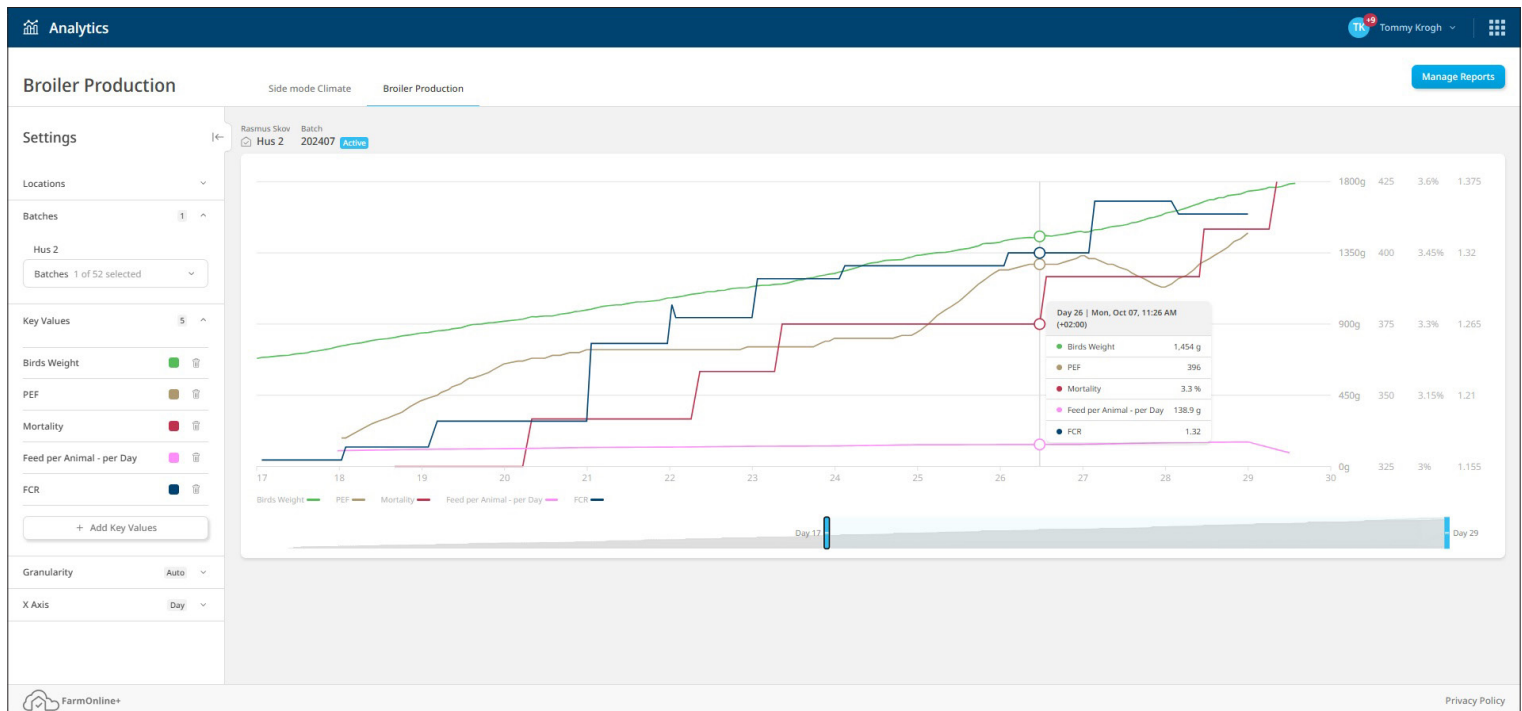


### Trend Warnings

The Trend Warnings app continuously monitors the broilers' feed and water intake and helps optimize batch performance by reacting faster to deviations.

Trend Warnings works with an adaptive reference. The adaptive reference is adjusted accordingly if a batch of broilers performs better or worse than expected. The adaptive reference is thus batch-specific and not based on standard references.

Trend Warnings generates warnings and notifications if discrepancies between the adaptive reference and the actual situation occur.



## Analyze

If there are any deviations from the desired climate or production results, the farm manager can examine the figures and further analyze them using the Analyze app.

The app enables the farm manager to analyze climate data, including temperature, humidity, CO<sub>2</sub>, and ammonia levels. It also allows the manager to adjust production based on weight, feed, water, and mortality analyses.

It is possible to compare the data to historical data or references from breeding companies.

Thus, the analysis can focus on optimizing growth through optimum feed utilization or for layers to optimize the proportion between growth and egg production.

### SKOV A/S

Hedelund 4 • 7870 Roslev • Denmark  
T: (+45) 7217 5555

SKOV Asia Ltd.  
PB Tower • 10110 Bangkok • Thailand  
T: (+66) 2 382 3031-2

SKOV North America, Inc  
160 Clairemont Avenue, Suite 200 • Decatur, GA 30030 • USA  
T: +1 (678) 954 5743

SKOV Technical Services (Tianjin) Co., Ltd.  
斯科弗技术服务(天津)有限公司  
天津市武清开发区  
T: 电话: (+86)-131-6178-4389

E: [info@skov.com](mailto:info@skov.com)

### Your partner for service



#### LAE Anlagenbau GmbH

Altenwalder Chaussee 94-100  
D - 27472 Cuxhaven  
GERMANY

TEL: +49 4721 105 0  
FAX: + 49 4721 105 210  
[info@lae-cuxhaven.de](mailto:info@lae-cuxhaven.de)  
[www.lae-cuxhaven.de](http://www.lae-cuxhaven.de)



[www.skov.com](http://www.skov.com)